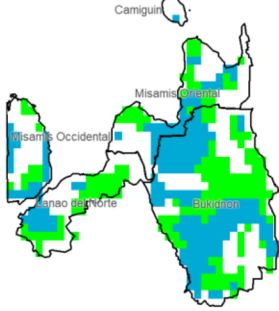
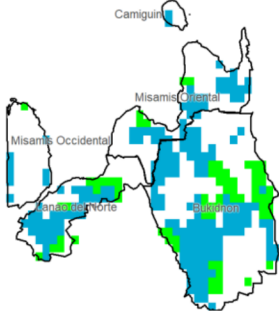


# Region X (Northern Mindanao)

Water Availability for Rice  
Prevailing Stage : (IV) Ripening



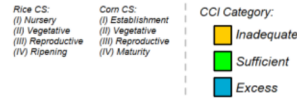
Water Availability for Corn  
Prevailing Stage : (III) Reproductive



## Provincial Values

Province	Mon. Ave. Rainfall (mm)	Rice		Corn	
		CS	CCI (%)	CS	CCI (%)
Bukidnon	210.5	I	270.7	I	411.0
		II	264.0	II	377.1
		III	260.8	III	355.9
		IV	260.8	IV	376.1
Camiguin	393.1	I	362.9	I	567.4
		II	343.5	II	461.2
		III	334.6	III	395.7
		IV	334.6	IV	457.9
Lanao del Norte	236.6	I	235.6	I	388.1
		II	226.9	II	331.5
		III	222.8	III	297.8
		IV	222.8	IV	329.8
Misamis Occidental	300.9	I	319.1	I	477.5
		II	312.8	II	460.3
		III	309.9	III	448.9
		IV	309.9	IV	459.8
Misamis Oriental	243.1	I	266.0	I	445.5
		II	257.3	II	393.7
		III	253.2	III	362.1
		IV	253.2	IV	392.1

Crop Stage (CS) highlighted in black is the dominant stage during the month of October

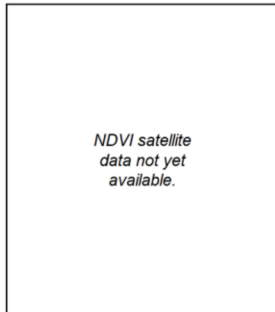


## Regional Summary

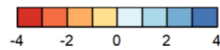
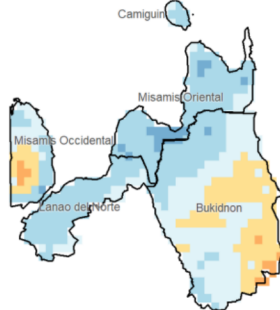
Most parts of the region received excessive rainfall that might have caused potential damage on both rice and corn crops at any of the crop stages. The SPEI3 further indicates generally wetter than normal conditions in most parts of the region except in areas of Bukidnon and Misamis Occidental where near normal condition were experienced for the past three months.

Furthermore, the rainfall extremes indicate notable rainfall estimates which could have caused possible damage on both rice and corn crops with 50-100mm maximum 1-day and 100-200mm maximum 5-day rainfall associated. The excessive rainfall for the month as well as the extreme rainfall event could be mainly attributed to the rainfall brought by the through of the tropical cyclone Kristine during the fourth week of the month and localized thunderstorms.

## NDVI



## SPEI3 (Aug-Sep-Oct)



## RX1day



## RX5day

